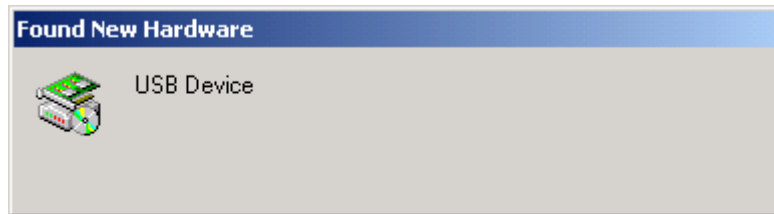


Installation Guide

GPS Receiver Serial USB Use Only

1. USB Driver Installation

- Connect GPS Receiver USB connector to computer. Computer will detect the new device, and then starts the installation program, please direct the driver to the **USB Driver** folder for driver. If you have plugged the cable into the PC while running the setup installation, please unplug and re-plug the cable for the system to detect the device.

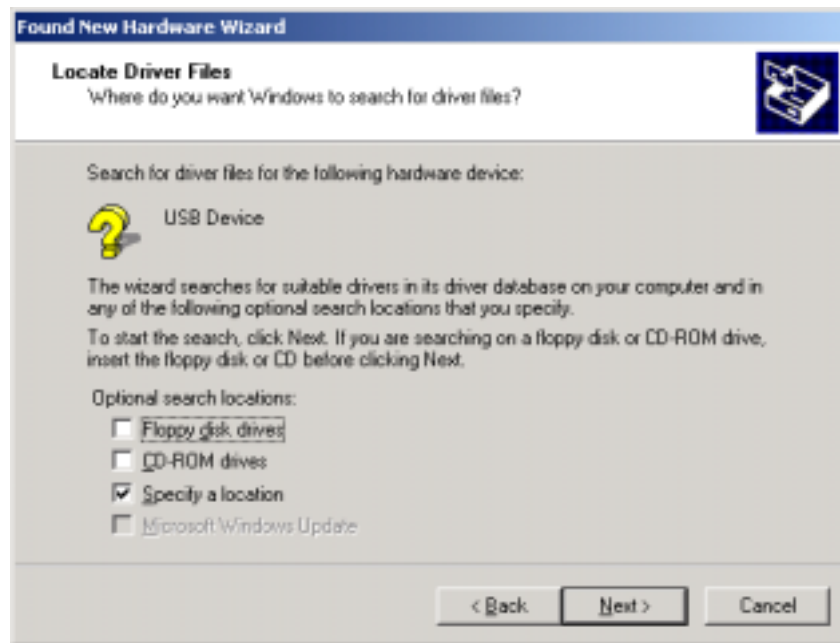


- Click "Next"

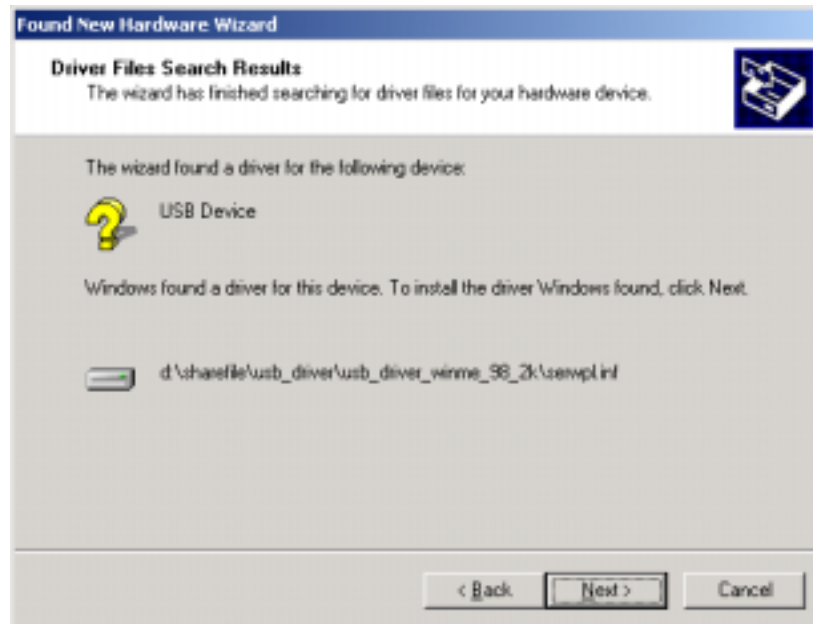
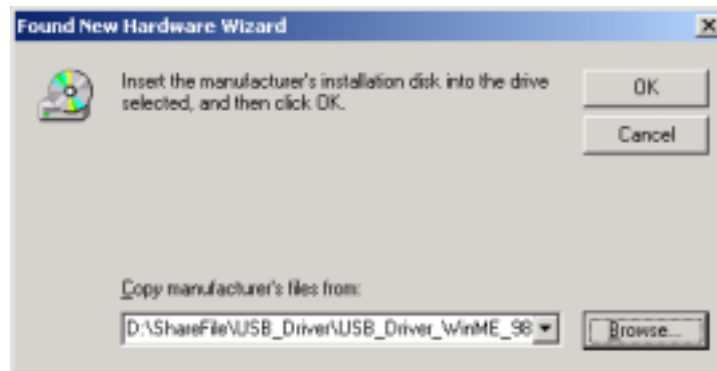
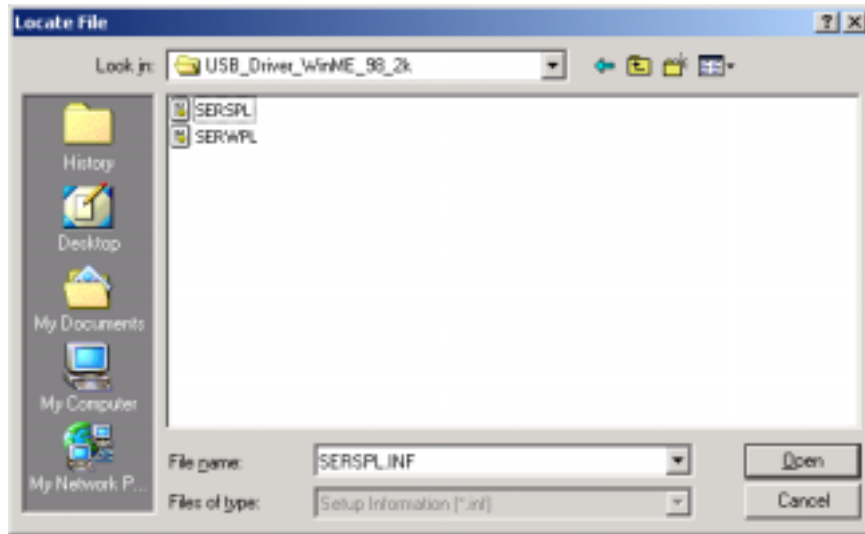


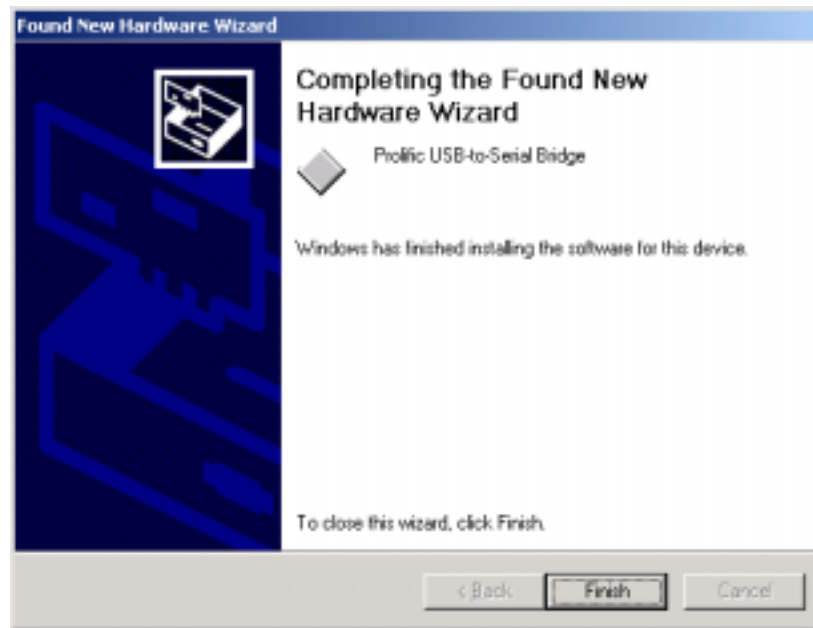


- Click **Next** to continue

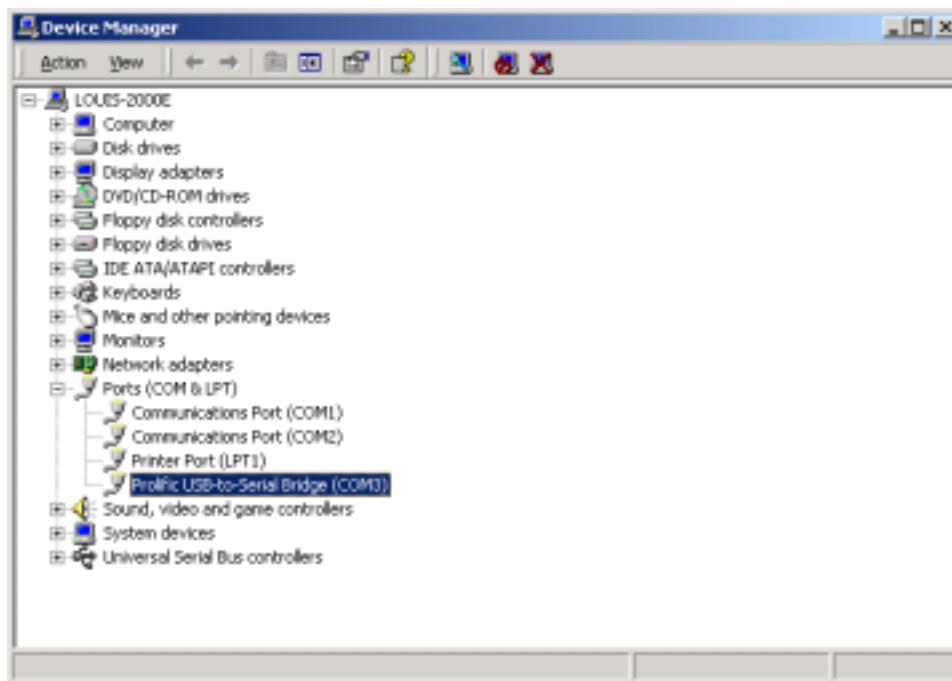


- Direct the path to USB Driver folder and find the driver for your system.





- After the installation is completed, please make sure unplug and plug the USB cable again.
- Go to **Device Manager** and select **Ports (COM & LPT)** to verify if a virtual COM port **USB to Serial Port** was created. Please note that the Virtual COM Port number might be different from every computer.

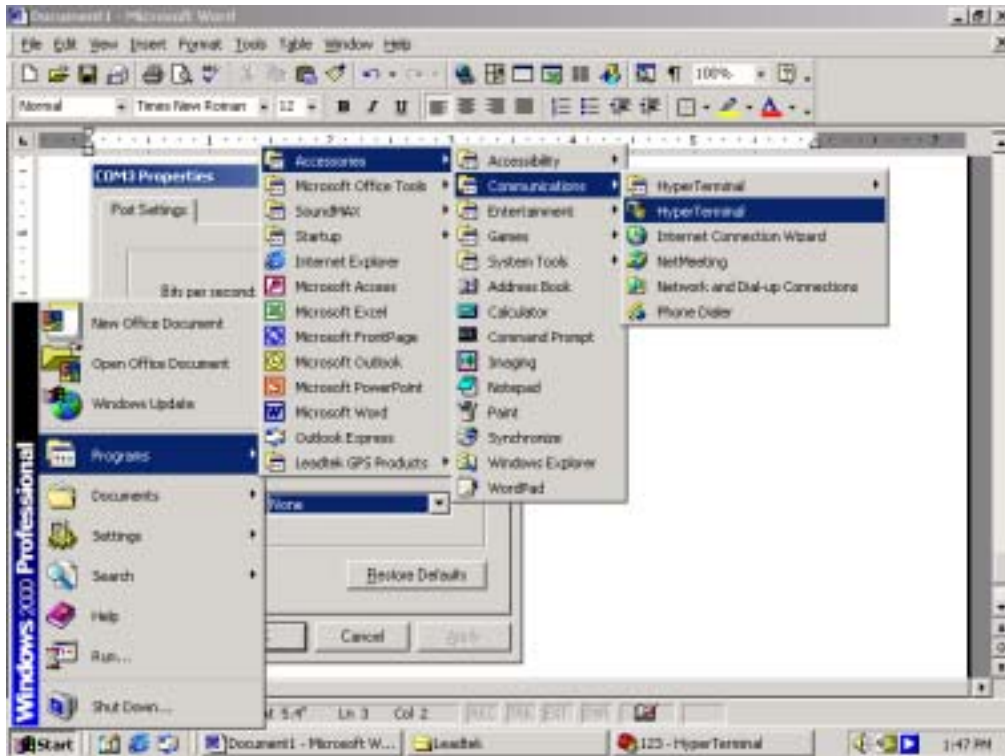


Note: Before using *navigation software*, please confirm the COM Port numbers created by your computer and provided by your navigation software.

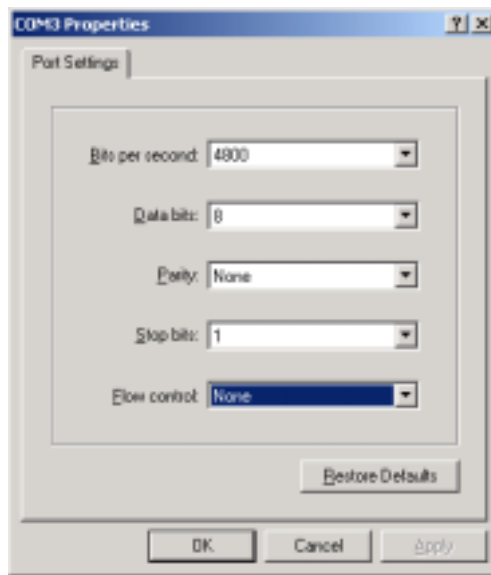
Otherwise, the navigating software won't receive the satellite signal, because of the un-match COM Port setting.

2. After Installation

- Users can use the Hyper Terminal program of Windows to verify that the GPS and the USB driver are actually configured properly and working.
- The Hyper Terminal program of Window 98 can not select COM port above COM5. Users test with map software directly.
- Run the **Hypertrm.exe** from "Program → Accessories → Communications → Hyper Terminal".



- Select the proper COM port for your GPS device.
- Set COM port to:
 - Baud rate: 4800
 - Data bit: 8
 - Parity: None
 - Stop bit: 1
 - Flow control: None



- If no mistakes have been made in the configuration process there should be data being displayed in the window, which is confirmation that the communication between the GPS device and the **Hyper Terminal** software is working properly.

